



Walnut Cottage, Ashton
£360,000



Situated in the idyllic village of Ashton, just 5 minutes from Oundle, is this two bedroom semi-detached bungalow cottage with thatched roof and stone mullioned leaded light windows. Set back from the quiet village road with a long frontage and wraparound gardens to three sides, Walnut Cottage has open countryside views at the back and a Shepherd's Hut in the garden. The setting couldn't be more delightful, surrounded by listed thatched cottages around a central village green.

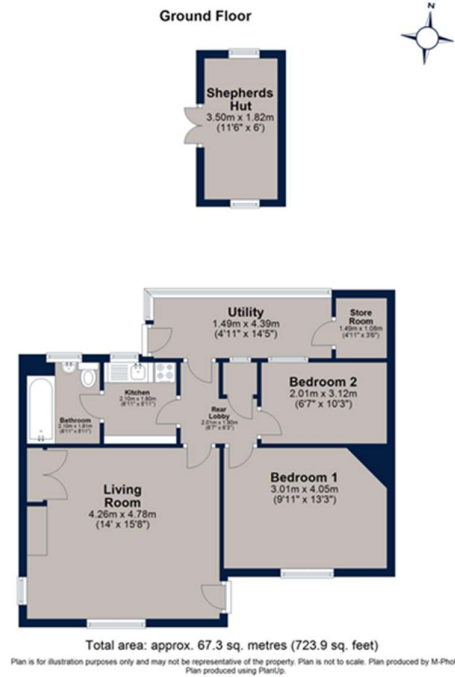
The accommodation currently comprises: living room with character features, kitchen, two bedrooms, bathroom and rear utility. This property is not listed and has planning permission in place for a rear extension that will provide a much larger kitchen and second bedroom.

- Tenure: Freehold
- Council Tax: Band B
- Klargester sewerage system shared with neighbouring property
- Oil Fired Heating
- Planning permission in place





Walnut Cottage, Ashton



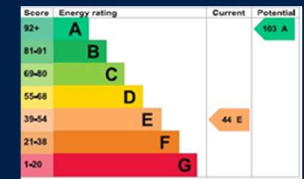
Osprey Oakham
4 Burley Road
Oakham
Rutland LE15 6DH
01572 756675
oakham@osprey-property.co.uk

Osprey Stamford
7 Red Lion Street
Stamford
Lincolnshire, PE9 1PA
01780 769269
stamford@osprey-property.co.uk

Osprey Oundle
6 Crown Court
Market Place
Oundle, PE8 4BQ
01832 272225
oundle@osprey-property.co.uk

Osprey Melton
8 Burton Road
Melton
Leicestershire, LE13 1AE
01664 778170
melton@osprey-property.co.uk

Set in the tranquil village of Ashton, just 5-minutes from the historic market town of Oundle. Walnut Cottage is a thatched, two bedroom semi-detached bungalow with gardens to three sides, open countryside to the rear and beautiful mullioned, leaded light windows. Planning permission is granted for an extension to both the kitchen and the second bedroom.



Agents Note: Whilst every care has been taken to prepare these particulars, they are for guidance purposes only. All measurements are approximate, and are for general guidance purposes only and whilst every care has been taken to ensure their accuracy, they should not be relied upon, and potential buyers/tenants are advised to recheck the measurements