



 SPREY  
PROPERTY



SPREY  
PROPERTY

Springfield Way, Oakham  
Offers In Excess Of £385,000





Set within a desirable and quiet development within a short walk to Oakham Town centre, this modern and spacious family home offering well-proportioned accommodation throughout including two reception rooms, four generous bedrooms, a family bathroom and a separate en-suite shower room which the current owners have disconnected and use as wardrobe. This eye-catching home offers scope to further enhance and improve, if required. Positioned on a plot with driveway parking, an integral single garage and a private rear garden. As you approach the property from the front, the covered porch leads you through the front door and into the light and airy entrance hallway with stairs leading to the first-floor landing. The living room is positioned at the front of the property and overlooking the front garden and arch way leading into the dining room which has views over the rear garden. The kitchen has been fitted with a range of wall and base units. The downstairs WC completes the ground floor. From the first-floor landing, you have four spacious bedrooms, described as three double bedrooms and a large single bedroom, which is currently used as a study. The principal bedrooms' ensuite is currently used as a walk-in wardrobe and fittings capped off; this is easily reversed. The first floor is completed by the modern three-piece family bathroom. The property is positioned on a generous plot and has a well-maintained front garden with low-level shrubs. There is driveway parking along with access to the integral single garage. Gated access leads around to the rear garden where you find a low maintenance and easy-to-maintain space, mainly laid to lawn with a large patio area, with a good degree of privacy.

TENURE: Freehold - EPC: C - COUNCIL TAX: D - All Mains connected

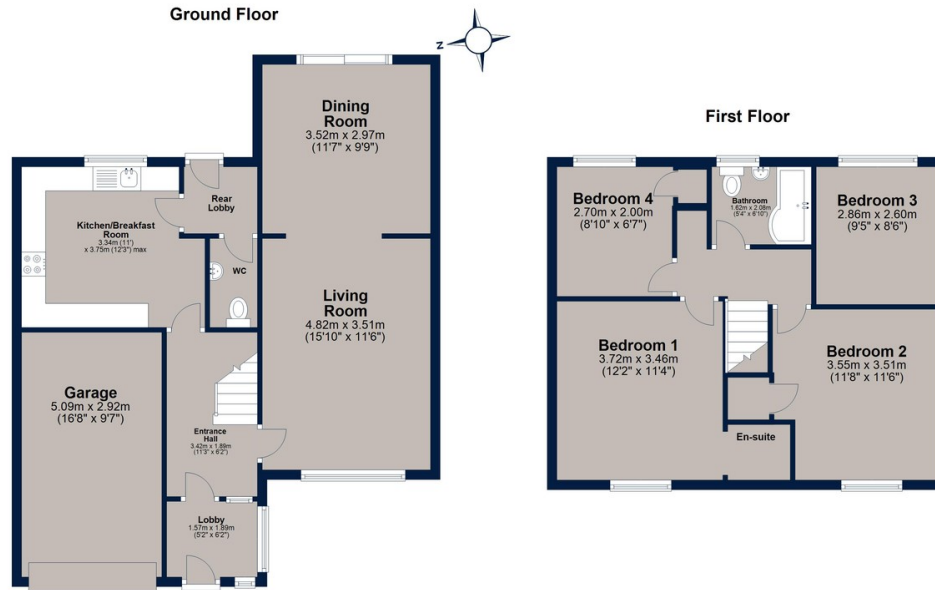








# Springfield Way, Oakham

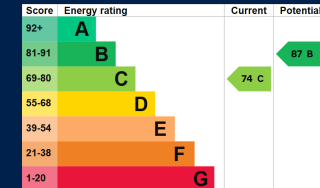


Total area: approx. 122.7 sq. metres (1321.2 sq. feet)

Plan is for illustration purposes only and may not be representative of the property. Plan is not to scale. Plan produced by M-Photo  
Plan produced using PlanUp.



Oakham is a highly popular market town, offering a range of amenities and services including restaurants, shops, bars, doctor's surgery, hospital and both primary/secondary schooling. There is a bus station providing regular services around the town and through to neighbouring villages and towns, as well as a train station with direct links to further towns and cities.



Osprey Oakham  
4 Burley Road  
Oakham  
Rutland LE15 6DH  
01572 756675  
oakham@osprey-property.co.uk

Osprey Stamford  
7 Red Lion Street  
Stamford  
Lincolnshire, PE9 1PA  
01780 769269  
stamford@osprey-property.co.uk

Osprey Oundle  
6 Crown Court  
Market Place  
Oundle, PE8 4BQ  
01832 272225  
oundle@osprey-property.co.uk

Osprey Melton  
8 Burton Road  
Melton  
Leicestershire, LE13 1AE  
01664 778170  
melton@osprey-property.co.uk



Agents Note: Whilst every care has been taken to prepare these particulars, they are for guidance purposes only. All measurements are approximate, and are for general guidance purposes only and whilst every care has been taken to ensure their accuracy, they should not be relied upon, and potential buyers/tenants are advised to recheck the measurements