



North Brook Close, Greetham  
Offers in excess of £280,000





Beautifully presented stone semi-detached three-bedroom home, with solar panels. Found in the sought-after village of Greetham. Benefitting from en-suite to principal bedroom, kitchen diner, driveway parking and single garage, gas central heating. Open the front door into the entrance hall where you gain access to the w/c, living room and dining kitchen which has an array of shaker style units including space for a washing machine and integrated, dishwasher, oven, fridge freezer. The kitchen opens to the dining room which overlooks the garden. The kitchen also has a walk-in cupboard which makes a great store/pantry. Climb the stairs from the hallway to the landing, where you gain access to three good sized bedrooms, en-suite to the principal and a family bathroom. Externally, the property is set on an attractive plot and benefits from driveway parking and leads to the single garage and a well-maintained rear garden mainly laid to lawn, enclosed with fencing and gated access to the driveway and overlook woodland.

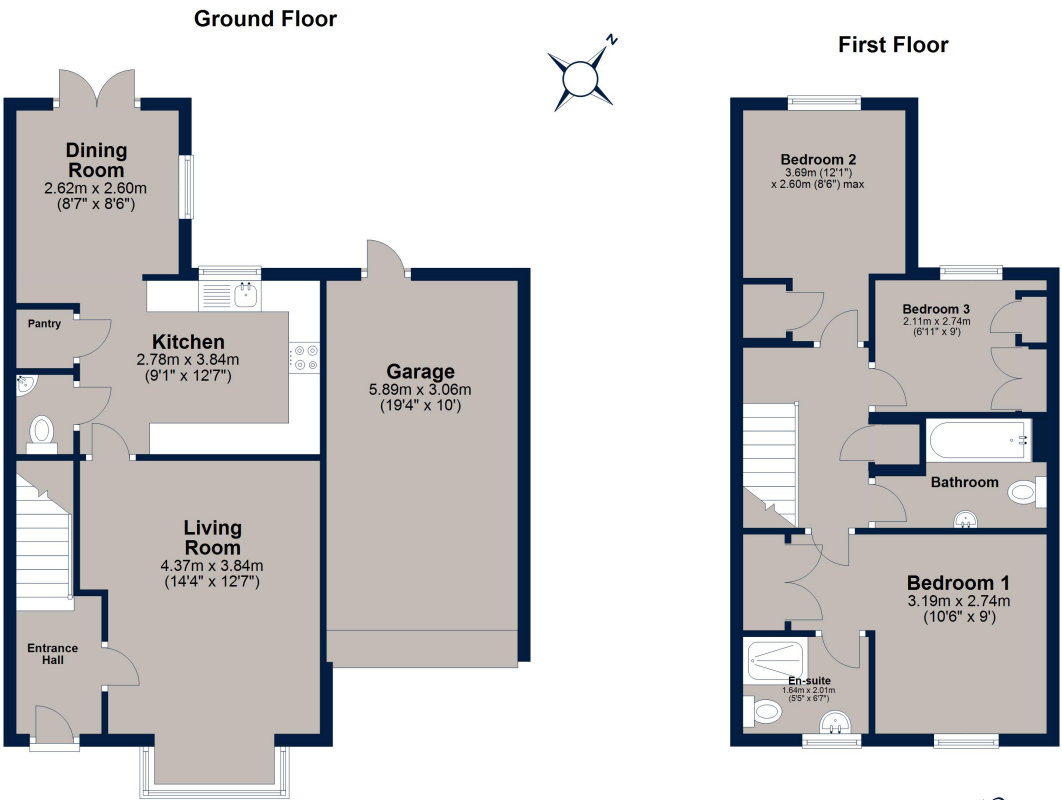
TENUE: Freehold  
 EPC: B  
 COUNCIL TAX: C  
 All Mains Attached  
 Management Charge of £345.36 per Annum (subject to change)







# North Brook Close, Greetham



Total area: approx. 104.1 sq. metres (1121.0 sq. feet)  
Plan is for illustration purposes only and may not be representative of the property. Plan is not to scale. Plan produced by M-Photo  
Plan produced using PlanUp.

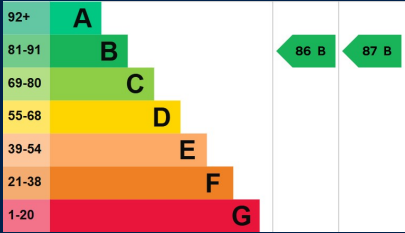
**Osprey Oakham**  
4 Burley Road  
Oakham  
Rutland LE15 6DH  
01572 756675  
oakham@osprey-property.co.uk

**Osprey Stamford**  
7 Red Lion Street  
Stamford  
Lincolnshire, PE9 1PA  
01780 769269  
stamford@osprey-property.co.uk

**Osprey Oundle**  
6 Crown Court  
Market Place  
Oundle, PE8 4BQ  
01832 272225  
oundle@osprey-property.co.uk

**Osprey Melton**  
8 Burton Road  
Melton  
Leicestershire, LE13 1AE  
01664 778170  
melton@osprey-property.co.uk

Greetham is a pretty village to the east of Oakham with excellent travel links being approximately 3 miles from the A1. The east coast mainline runs through Peterborough, allowing access to London in less than an hour by train. The village boasts two great pubs and sits just four miles from Rutland Water with a regular bus service to Oakham and beyond.



Agents Note: Whilst every care has been taken to prepare these particulars, they are for guidance purposes only. All measurements are approximate, and are for general guidance purposes only and whilst every care has been taken to ensure their accuracy, they should not be relied upon, and potential buyers/tenants are advised to recheck the measurements