



2 Bellamy Road, Oundle, PE8 4NA

£295,000



A three-bedroom end of terrace family home with off-road parking for two cars. This property benefits from a downstairs cloakroom and utility room and is neatly presented and well maintained throughout. This spacious home comprises of a large and modern kitchen/diner, living room, utility and cloakroom on the ground floor. On the first floor there are two double bedrooms, a single bedroom, and a family bathroom with a shower facility over the bath.

The south- west facing garden ensures for daily sunshine, with an enclosed courtyard connected to the interior by French doors.

Oundle is a charming market town, known for its exceptional schools, cafes and restaurants. This property is situated within walking distance to Oundle's beautiful town centre, close to all local amenities.

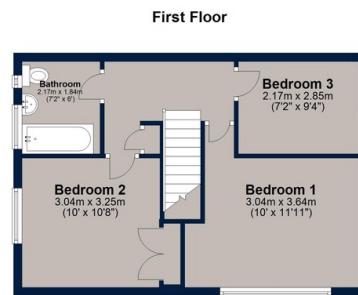
This property is ready to move in to, and is offered with no forward chain.

- Tenure: Freehold
- Gas Central Heating
- Council Tax: Band B
- All Mains Services Are Connected
- No Forward Chain
- Ultrafast Gigaclear Fibre Broadband in situ





# 2 Bellamy Road, Oundle, PE8 4NA

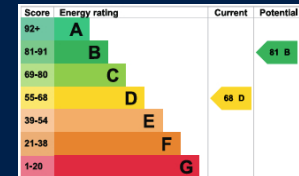


Total area: approx. 91.5 sq. metres (984.9 sq. feet)

Plan is for illustration purposes only and may not be representative of the property. Plan is not to scale. Plan produced by M-Photo Plan produced using PlanUp.



A well-presented three-bedroom family home, benefitting from a downstairs cloakroom and utility room, kept in immaculate condition. Offering parking for two vehicles, and a sunny south-west facing garden. Ready to move into with no forward chain.



Osprey Oakham  
4 Burley Road  
Oakham  
Rutland LE15 6DH  
01572 756675  
oakham@osprey-property.co.uk

Osprey Stamford  
7 Red Lion Street  
Stamford  
Lincolnshire, PE9 1PA  
01780 769269  
stamford@osprey-property.co.uk

Osprey Oundle  
6 Crown Court  
Market Place  
Oundle, PE8 4BQ  
01832 272225  
oundle@osprey-property.co.uk

Osprey Melton  
8 Burton Road  
Melton  
Leicestershire, LE13 1AE  
01664 778170  
melton@osprey-property.co.uk



Agents Note: Whilst every care has been taken to prepare these particulars, they are for guidance purposes only. All measurements are approximate, and are for general guidance purposes only and whilst every care has been taken to ensure their accuracy, they should not be relied upon, and potential buyers/tenants are advised to recheck the measurements