



Creed Road, Oundle
£279,000



A modern three-bedroom end of terraced house offered in good condition with neutral decoration and flooring. The property has a private rear garden and driveway adjacent to the house, with room for two cars in front of the single garage.

The accommodation consists of: entrance hall, downstairs cloakroom, living room and kitchen dining room on the ground floor. Upstairs there are three bedrooms, the main with an en-suite shower room and there is a family bathroom.

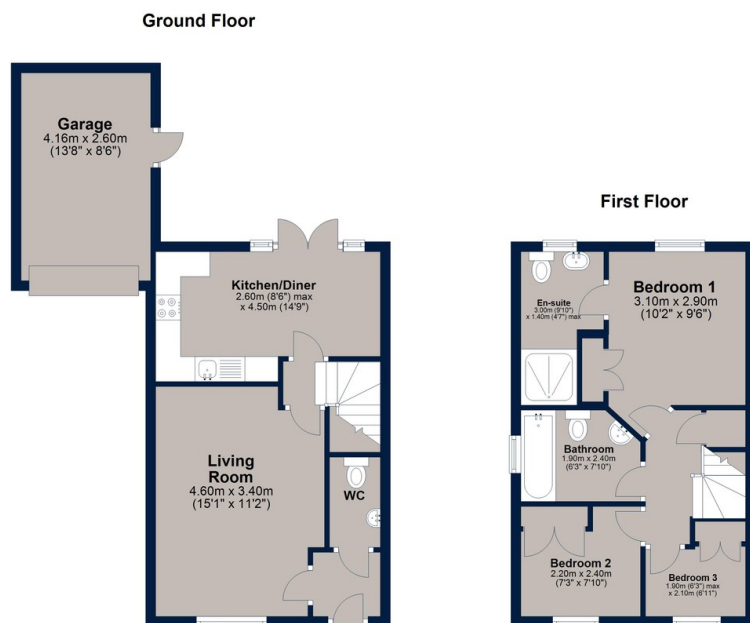
Creed Road is a popular development off Glaphorn Road in Oundle, a 15-minute stroll to the marketplace, with a weekly market as well as a farmer's market every month. Offering a range of independent shops, cafes, and restaurants Oundle has a lot of choice including the highly rated local schools - the primary school being just a short walk away. Corby, Stamford, Kettering, and Peterborough are all within 15 miles, providing access to the rail network and with good links to major roads.

Tenure: Freehold
Council Tax: Band C
All Mains Services Connected
Management Fee Payable: £300 pa TBC





Creed Road, Oundle



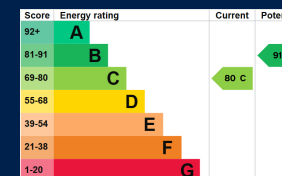
Total area: approx. 78.1 sq. metres (840.4 sq. feet)

Plan is for illustration purposes only and may not be representative of the property. Plan is not to scale. Plan produced by M-Photo
Plan produced using PlanUp.



This three-bedroom modern property has loads to offer including contemporary kitchen and bathrooms, garage and off road parking for 2 cars, gardens and neutral decoration.

Call now to view.



Osprey Oakham
4 Burley Road
Oakham
Rutland LE15 6DH
01572 756675
oakham@osprey-property.co.uk

Osprey Stamford
7 Red Lion Street
Stamford
Lincolnshire, PE9 1PA
01780 769269
stamford@osprey-property.co.uk

Osprey Oundle
6 Crown Court
Market Place
Oundle, PE8 4BQ
01832 272225
oundle@osprey-property.co.uk

Osprey Melton
8 Burton Road
Melton
Leicestershire, LE13 1AE
01664 778170
melton@osprey-property.co.uk



Agents Note: Whilst every care has been taken to prepare these particulars, they are for guidance purposes only. All measurements are approximate, and are for general guidance purposes only and whilst every care has been taken to ensure their accuracy, they should not be relied upon, and potential buyers/tenants are advised to recheck the measurements