



Yates Close, Weldon  
£350,000





A four-bedroom detached property benefiting from off-road parking for two to three cars, three reception rooms, a utility room and an open-plan kitchen/dining room. This clean and bright home enjoys fresh decoration throughout and provides ample space for versatile living. As you go through the home you are greeted with a bright and spacious living room with a large window, overlooking the green area, this room leads into the kitchen/dining room which benefits from a large, built-in pantry cupboard, a breakfast bar and ample space for a sizeable dining table. French doors lead into the modern conservatory opening out onto the well-kept garden. The current owners have converted the garage into a versatile space, which could be used as an office, gym or snug. Additionally, the ground floor also benefits from a utility room and a cloakroom. The first floor comprises of three substantial double bedrooms, one of which has a clean, modern en-suite and a large built-in wardrobe. There is also a single bedroom and a family bathroom. Externally, the property has a garden with a decking area, covered by a pergola for outdoor dining, a driveway for two to three cars and the garage, which is divided into a reception room and a large storage cupboard with an electric door.

This contemporary home has been well-maintained by its current owners and is presented in move-in condition.

Tenure: Leasehold- Will be Freehold upon purchase

Council Tax: Band D

Management Fee Payable: £127.68 2025

EPC: Rating B

Gas Central Heating

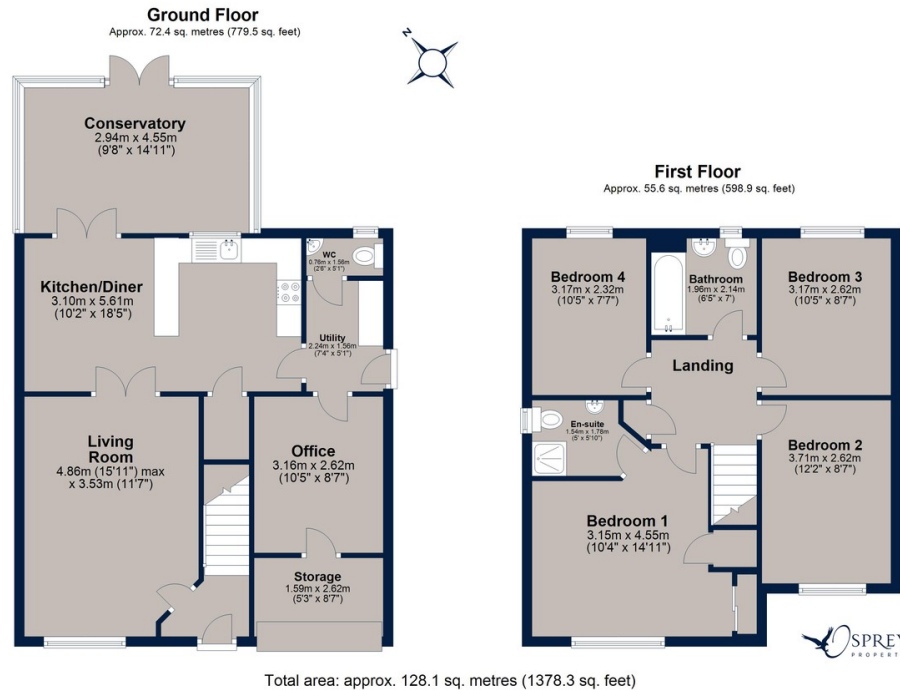




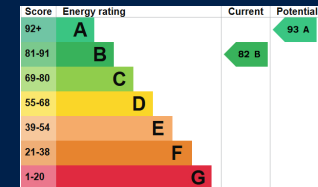




# Yates Close, Weldon



A four bedroom detached home benefitting from off-road parking, a conservatory and an open-plan kitchen/dining room. This contemporary home has been continually upgraded, the garage has been converted into a versatile space, which can be used as a study, gym or snug. This naturally light home is located on a private road in a quite cul-de-sac in Weldon.



**Osprey Oakham**  
4 Burley Road  
Oakham  
Rutland LE15 6DH  
01572 756675  
oakham@osprey-property.co.uk

**Osprey Stamford**  
7 Red Lion Street  
Stamford  
Lincolnshire, PE9 1PA  
01780 769269  
stamford@osprey-property.co.uk

**Osprey Oundle**  
6 Crown Court  
Market Place  
Oundle, PE8 4BQ  
01832 272225  
oundle@osprey-property.co.uk

**Osprey Melton**  
8 Burton Road  
Melton  
Leicestershire, LE13 1AE  
01664 778170  
melton@osprey-property.co.uk

