



SPREY
PROPERTY

Chepstow Court, Barleythorpe
Asking Price Of £240,000



Modern stone-built home enjoys an enviable position with open green views to the front and is offered to the market with no forward chain.

The ground floor features a spacious dining kitchen fitted with contemporary units and built-in appliances, offering ample room for family dining or entertaining. A separate utility room adds everyday practicality, while a downstairs cloakroom provides convenience for guests. The generous living room is filled with natural light and enjoys a pleasant open outlook, creating a welcoming space for relaxation.

Upstairs, there are three well-proportioned bedrooms. The master bedroom benefits from a modern en-suite shower room, while the second bedroom is a spacious double. The third bedroom is a good-sized single, currently used as a dressing room, offering flexibility to suit a variety of needs. A stylish family bathroom serves the additional bedrooms.

Externally, the property boasts a well-maintained rear garden, laid mainly to lawn, perfect for outdoor enjoyment. A detached single garage and parking to the front complete this attractive home.

Well-designed, move-in ready, and located in a desirable setting, this property offers an excellent opportunity for a wide range of buyers. Early viewing is highly recommended.

Tenure: Freehold
All Mains Services Connected
Council Tax: Band C
EPC: C
Management Fees Payable



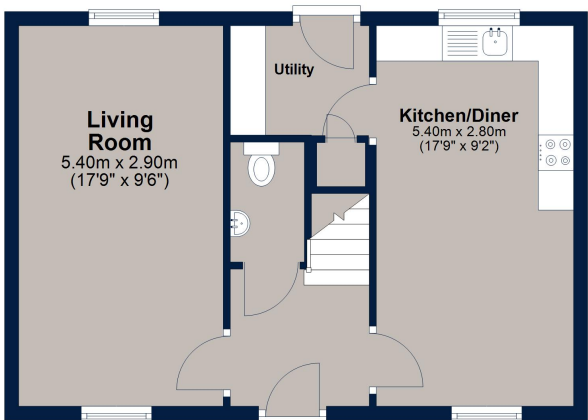


Chepstow Court, Barleythorpe

Oakham is a highly popular market town, offering a range of amenities and services including restaurants, shops, bars, doctor's surgery, hospital and both primary/secondary schooling. There is a bus station providing regular services around the town and through to neighbouring villages and towns, as well as a train station with direct links to further towns and cities.

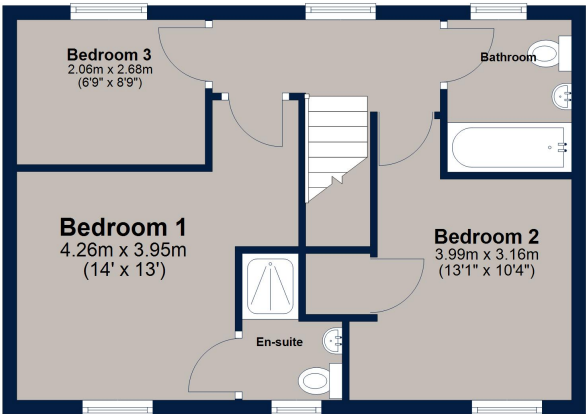
Ground Floor

Approx. 42.5 sq. metres (457.8 sq. feet)



First Floor

Approx. 42.5 sq. metres (457.8 sq. feet)



Total area: approx. 85.1 sq. metres (915.7 sq. feet)

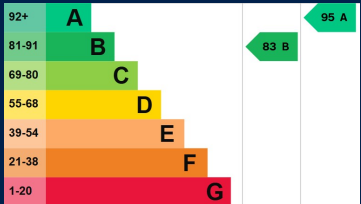
This floor plan is for illustrative purposes only and is not to scale. All measurements, doors, windows, rooms and other items are approximate and should not be relied upon for any purpose.
Plan produced using PlanUp.

Osprey
4 Burley Road
Oakham
Rutland LE15 6DH
01572 756675
oakham@osprey-property.co.uk

7 Red Lion Street
Stamford
Lincolnshire, PE9 1PA
01780 769269
stamford@osprey-property.co.uk

5 Crown Court
Market Place
Oundle, PE8 4BQ
01832 272225
oundle@osprey-property.co.uk

5 Barton Road
Melton
Leicestershire, LE13 1AE
01664 778170
melton@osprey-property.co.uk



Agents Note: Whilst every care has been taken to prepare these particulars, they are for guidance purposes only. All measurements are approximate, and are for general guidance purposes only and whilst every care has been taken to ensure their accuracy, they should not be relied upon, and potential buyers/tenants are advised to recheck the measurements