



Jubilee Court, Oakham  
Offers Over £235,000



Ideally positioned in a highly convenient central location, this versatile and well-presented home is just a short stroll from both the vibrant town centre and the mainline train station, providing excellent access for commuters and an array of local amenities. Arranged over three thoughtfully planned floors, the property offers exceptionally flexible accommodation that currently functions as a spacious two-bedroom home but has the potential to be reconfigured to provide up to four bedrooms, making it perfectly suited to families, professionals, or those in need of adaptable living space.

The principal bedroom is generously proportioned and benefits from a en suite, offering a peaceful retreat on the upper floor, along with a further bedroom. On the first floor, a bright and airy living room with box bay window creates an inviting space for relaxation and entertaining, enhanced by natural light and a well-balanced layout, also to this floor is the bathroom and third bedroom/dining room. The ground floor provides additional living and dining kitchen areas, with scope to tailor the space to individual needs, whether that be extra bedrooms, a home office, or a second reception room.

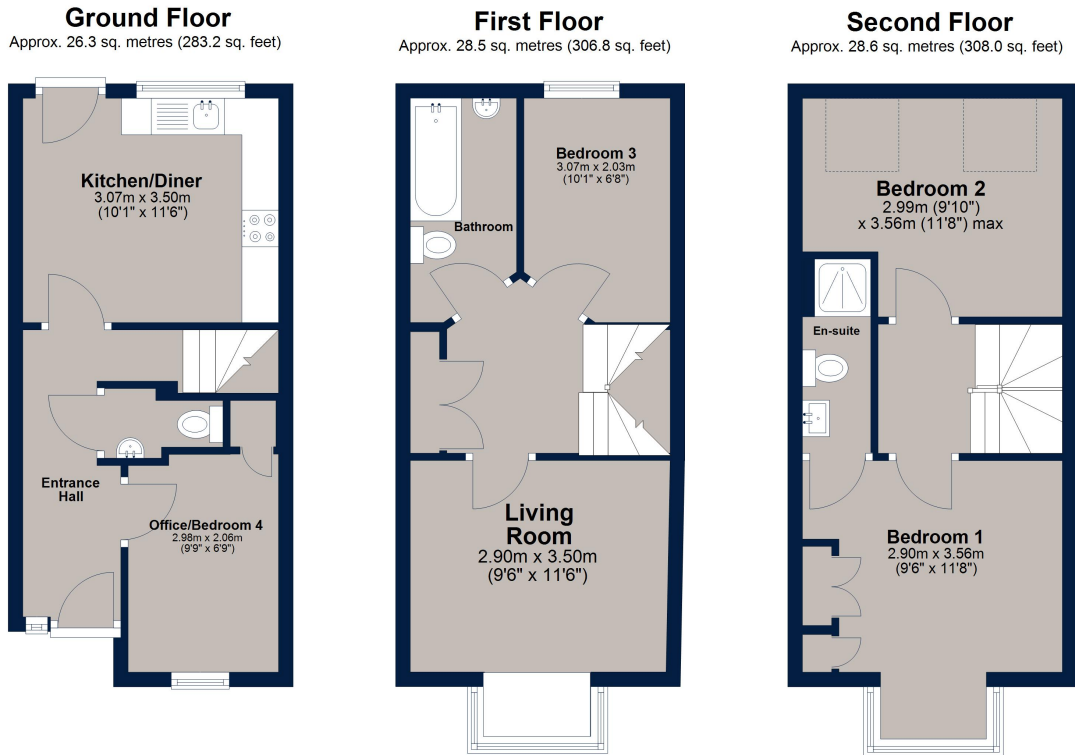
Externally, the property boasts a private, low-maintenance courtyard garden – ideal for al fresco dining or simply unwinding outdoors. Further benefits include allocated parking, adding to the convenience of this superbly located home. Offering a rare combination of space, flexibility, and location, this property is a must-see for those seeking a central lifestyle without compromising on comfort or practicality.

TENURE: Freehold  
All Mains Connected  
EPC: C  
COUNCIL TAX: C





# Jubilee Court, Oakham



Total area: approx. 83.4 sq. metres (898.0 sq. feet)

This floor plan is for illustrative purposes only and is not to scale. All measurements, doors, windows, rooms and other items are approximate and should not be relied upon for any purpose.  
Plan produced using PlanUp.

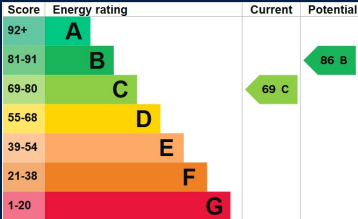
Osprey Oakham  
4 Burley Road  
Oakham  
Rutland LE15 6DH  
01572 756675  
oakham@osprey-property.co.uk

Osprey Stamford  
7 Red Lion Street  
Stamford  
Lincolnshire, PE9 1PA  
01780 769269  
stamford@osprey-property.co.uk

Osprey Oundle  
6 Crown Court  
Market Place  
Oundle, PE8 4BQ  
01832 272225  
oundle@osprey-property.co.uk

Osprey Melton  
8 Burton Road  
Melton  
Leicestershire, LE13 1AE  
01664 778170  
melton@osprey-property.co.uk

Oakham is a highly popular market town, offering a range of amenities and services including restaurants, shops, bars, doctor's surgery, hospital and both primary/secondary schooling. There is a bus station providing regular services around the town and through to neighbouring villages and towns, as well as a train station with direct links to further towns and cities.



Agents Note: Whilst every care has been taken to prepare these particulars, they are for guidance purposes only. All measurements are approximate, and are for general guidance purposes only and whilst every care has been taken to ensure their accuracy, they should not be relied upon, and potential buyers/tenants are advised to recheck the measurements