



Glen Road, Castle Bytham
£375,000





This spacious and beautifully presented four-bedroom family home offers generous living space, modern comforts, and a prime location, making it an ideal choice for families or professionals alike. Recently redecorated throughout and with new carpets laid, the property is ready to move straight into and enjoy.

On the ground floor, a welcoming entrance hall leads to a large dual-aspect living room featuring an elegant electric fireplace – the perfect space to relax and unwind. To the rear of the property is a bright and spacious kitchen/diner, fitted with an excellent range of units, integrated dishwasher, and ample room for a dining table, ideal for family meals or entertaining. A separate utility area provides additional convenience, and there is also a downstairs WC.

Upstairs, the principal bedroom benefits from built-in wardrobes and a contemporary en-suite shower room. There are three further well-proportioned double bedrooms and a modern three-piece family bathroom complete with shower over bath.

Externally, the property boasts a landscaped, low-maintenance rear garden that is fully enclosed and features gated pedestrian access – a safe and peaceful spot for relaxing or entertaining outdoors. To the front, there is ample driveway parking and a single garage, providing excellent storage or secure parking.

With its spacious layout, modern presentation, and practical features, this property offers everything needed for comfortable family living. Early viewing is highly recommended.





DIMENSIONS :

ENTRANCE HALL -

LIVING ROOM - 5.42m x 3.90m (17'9" x 12'10")

KITCHEN/DINER - 5.42m x 4.11m (17'9" x 13'6")

UTILITY AREA -

WC -

BEDROOM 1 - 4.28m x 2.96m (14'1" x 9'9")

EN-SUITE -

BEDROOM 2 - 2.00m x 3.74m (6'7" x 12'3")

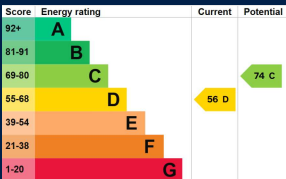
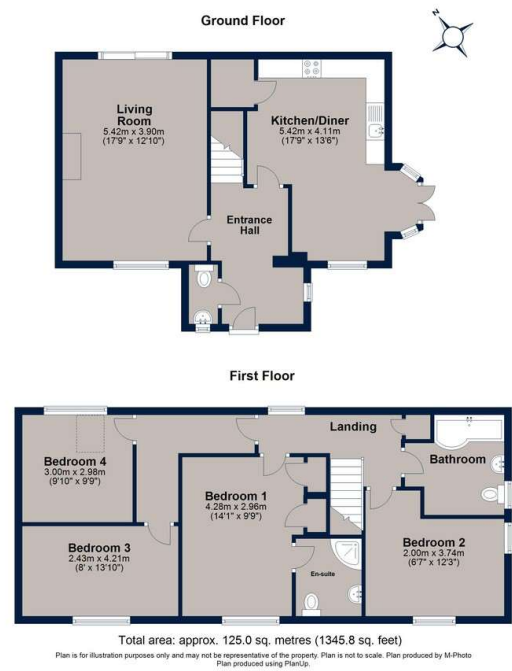
BEDROOM 3 - 2.43m x 4.21m (8'0" x 13'10")

BEDROOM 4 - 3.00m x 2.98m (9'10" x 9'9")





Glen Road, Castle Bytham



Osprey Oakham
4 Burley Road
Oakham
Rutland LE15 6DH
01572 756675
oakham@osprey-property.co.uk

Osprey Stamford
7 Red Lion Street
Stamford
Lincolnshire, PE9 1PA
01780 769269
stamford@osprey-property.co.uk

Osprey Oundle
6 Crown Court
Market Place
Oundle, PE8 4BQ
01832 272225
oundle@osprey-property.co.uk

Osprey Melton
8 Burton Road
Melton
Leicestershire, LE13 1AE
01664 778170
melton@osprey-property.co.uk



Agents Note: Whilst every care has been taken to prepare these particulars, they are for guidance purposes only. All measurements are approximate, and are for general guidance purposes only and whilst every care has been taken to ensure their accuracy, they should not be relied upon, and potential buyers/tenants are advised to recheck the measurements